

ANATOMIC PATHOLOGISTS' ASSISTANT BACHELOR OF SCIENCE

• imagine • transform • arrive



Imagine being a member of a coalition of researchers, educators and practitioners from many professions who work together to improve human health. We transform students into highly skilled health care practitioners who advance the health and well-being of society. Through research, we discover, evaluate and implement new knowledge to improve models and methods of practice in pharmacy and health sciences from the urban to global levels. Arrive at your health career destination by accepting our invitation to explore the programs of the Eugene Applebaum College of Pharmacy and Health Sciences.

imagine

WHAT DOES AN ANATOMIC PATHOLOGISTS' ASSISTANT DO?

An Anatomic Pathologists' Assistant (APA) is a highly trained professional who helps surgical pathologists in preparation, gross description and dissection of human tissue and surgical specimens. The APA will also assist to prepare and perform postmortem examinations, coordinate autopsy activities, including photography, specimen coding and report filing. They properly restore bodies for release to the funeral director and confirm legal authorization for special sampling, such as tissue donation and organ transplantation, and perform administrative duties.

The following organization can provide you with further information about a career as an Anatomic Pathologists' Assistant:

- American Association of Pathologists' Assistants (AAPA)
1-800-532-AAPA www.pathologistsassistants.org

WHY BECOME AN ANATOMIC PATHOLOGIST ASSISTANT?

"The Pathologists' Assistant Program at Wayne State has provided me with a fantastic foundation for what I'm doing— the curriculum gave me everything I needed to get me where I am today."

- TRINA SHERLITZ
Pathologists' Assistant

transform

WHY WAYNE STATE UNIVERSITY?

Wayne State University is one of America's premier urban research universities, with more than 33,000 graduate and undergraduate students. The University provides a multidisciplinary approach to research and education, and collaborates closely with government, industry and other institutions on a range of programs.

The Eugene Applebaum College of Pharmacy and Health Sciences (EACPHS) is located on the single largest academic medical campus in the United States and puts you in close proximity to the nation's leading health care educators. A degree from the College puts you in good company, with more than 12,000 EACPHS-educated health care professionals working in Michigan.

In the Wayne State Anatomic Pathologists' Assistant program, clinical training is offered in cooperation with the Detroit Medical Center hospitals and the Wayne County Medical Examiner's Office. Recent graduates have achieved an excellent pass rate on the national examination and are employed in leading medical centers across the nation. The program is accredited by the National Accrediting Agency for Clinical Laboratory Science (NAACLS), and is one of just nine accredited programs in the United States.

HOW DO I APPLY?

The application deadline is **May 15** of each year. Applicants must successfully complete the admission requirements, which include the application for admission to WSU and the professional program application. Completion of admission requirements does not guarantee admission.

arrive

ADMISSION REQUIREMENTS

- A minimum of 2.50 overall GPA, as well as a minimum 2.50 cumulative GPA in prerequisite coursework.
- All grades in prerequisite requirements must be a minimum of "C" or better (2.0 on a 4.0 grade scale).
- All prerequisite and University General Education coursework must be completed by the beginning of the professional program. All science coursework must be completed by May of the year of application. All nonscience coursework must be completed by August.
- Equivalent prerequisite coursework taken at an accredited college or university is acceptable.
- All applicants must attend a minimum of one monthly Information Meeting at the Eugene Applebaum College of Pharmacy and Health Sciences within one year of formal application to specific programs of choice. Additional information regarding attendance can be found on the College's website at <http://cphs.wayne.edu/meetings.php>

SCIENCE AND MATH PREREQUISITE COURSEWORK

BIO 1500 - Basic Life Diversity
BIO 1510 - Basic Life Mechanisms
BIO 2200 - Introductory Microbiology
BIO 2600- Introduction Cell Biology
BIO 2870 - Anatomy & Physiology
BIO 3070- Genetics
CHM 1020 - Survey of General Chemistry
CHM 1030 - Survey of Organic/Biochemistry
MAT 1800 - Elementary Functions
Science Requirements must have been taken within the past six years.

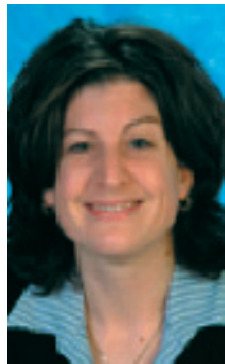
NON-SCIENCE PREREQUISITE COURSEWORK

ENG 1020 - Introductory College Writing (BC)
ENG 3050 - Report Writing (IC) (Alt. course ENG 3010)
PHI 2320 - Introduction to Ethics (PL)

Students who hold a previous bachelor's degree from a regionally accredited 4 year college or University are exempt from completing the requirements listed below.

UNIVERSITY GENERAL EDUCATION/DEGREE REQUIREMENTS

Historical Studies (HS)
Visual & Performing Arts Elective (VP)
Social Science (SS)
Foreign Culture (FC)
COM 1010 - Oral Communications (OC)
Computer Literacy Requirement (CL)
Critical Thinking Competency (CT)
American Society & Institutions (AI)



TRINA SHERLITZ graduated from the Wayne State Pathologist's Assistant program in 2004 - and quickly landed a teaching job in the Pathologists' Assistant Department at Rosalind Franklin University near Chicago. Her Wayne State background has also enabled her to work as a pathologist's assistant at nearby Lake Forest Hospital, which lets her bring practical, hands-on experience to her teaching. "I find myself quite blessed to have found this career," she says. "Every day I wake up in the morning and look forward to work. I get paid to do what I love to do."

THE ANATOMIC PATHOLOGIST'S ASSISTANT PROGRAM IS ACCREDITED BY:

NAACLS (National Accrediting Agency for Clinical Laboratory Sciences)
5600 N. River Rd.
Suite 720
Rosemont, IL 60018-5119
847-939-3597
www.naacls.org

GENERAL DEADLINES FOR ADMISSION

PROGRAM APPLICATION DUE - May 15th

For a checklist of application requirements:
<http://www.cphs.wayne.edu/program/apa-bs-apply.php>

UNDERGRADUATE APPLICATION DUE - May 15th

The Wayne State University Undergraduate Admissions Application is online at the following location:
www.admissions.wayne.edu

Office of Admissions
Welcome Center
42 W. Warren
Detroit, MI 48202
877-WSU-INFO or 313-577-3577

Financial Aid deadline - January 30
313-577-3378
www.financialaid.wayne.edu

GENERAL INFORMATION

Eugene Applebaum College of Pharmacy and Health Sciences
Office of Student and Alumni Affairs
259 Mack Avenue, Suite 1600
Detroit, MI 48201
313-577-1716
www.cphs.wayne.edu
cphsinfo@wayne.edu

Attend one of our Monthly Information Meetings held the 1st Tuesday of every month. For directions and to register to attend: <http://www.cphs.wayne.edu/meetings.php>